



Anthem Community Council & DLC: One Year Later February 2021



100% EMPLOYEE OWNED

DLC RESOURCES
THE LANDSCAPE MANAGEMENT EXPERTS

How Did We Get Here?

January 2020

Anthem's Requests to DLC:

- ***Provide Better Management of the Landscape***
- ***Provide Better Communication to Community Management***

Investment in Anthem

“What we can Measure, We can Manage”

- DLC needed to Understand:
 - Landscape Quantities (GIS)
 - What state landscape is in
 - What needs to be done to the landscape

Investment in Anthem

Time. Manpower. Technology.

- GIS Mapping
- Inventory Creation
- Data Analysis
- Field Inspections (boots on the ground)
- Proposal/Plan Creation (irrigation proposals, arbor proposals, turf plan, etc.)

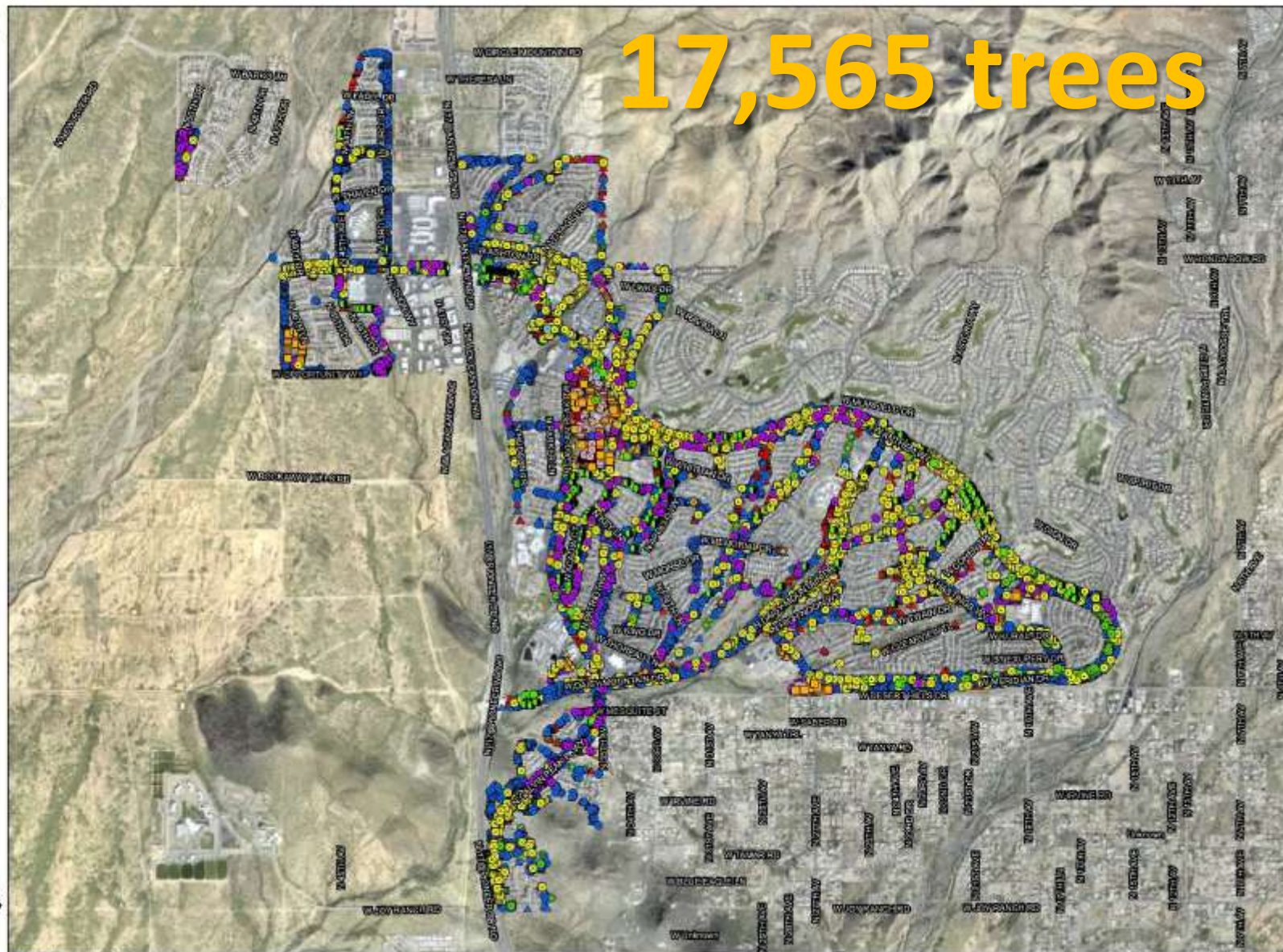
Anthem - Council Tree Inventory

Symbol, Species, Quantity - 17,565

- ACACIA - CAT-CLAW - 395
- ACACIA - SHOESTRING - 1
- ACACIA - SWEET - 334
- ACACIA - WHITETHORN - 12
- ACACIA - WILLOW - 22
- AFRICAN SUMAC - 4
- ASH - FAN TEX - 541
- CASCALOTE - 49
- CHASTE TREE - 2
- CHITALPA - 2
- COTTONWOOD - FREMONT WESTERN - 9
- DESERT HACKBERRY - 304
- DESERT IRONWOOD - 1,567
- DESERT MUSEUM - 228
- DESERT WILLOW - 334
- ELM - CHINESE EVERGREEN - 109
- JACARANDA - 1
- LAUREL - TEXAS MOUNTAIN - 90
- LOCUST - HONEY - 37
- MESQUITE - ARGENTINE - 6
- MESQUITE - CHILEAN - 214
- MESQUITE - NATIVE - 4,512
- MESQUITE - TEXAS HONEY - 27
- OAK - SOUTHERN LIVE - 106
- ORCHID TREE - 1
- PALO BREA - 79
- PALO VERDE - BLUE - 2,842
- PALO VERDE - LITTLELEAF - 4,322
- PALO VERDE - TEXASMEXICAN - 14
- SISSOO - 53
- TENAZA - 1
- TEXAS EBONY - 176
- TRIPU TREE - 28
- YELLOW BIRD OF PARADISE - 40
- SAGUARO - 1,550

17,565 trees

Inventory completed:
May 2020



CONFIDENTIALITY NOTICE: This document contains confidential and privileged materials for the sole use of the intended recipient(s). Any review, use, distribution or disclosure by others is strictly prohibited.

© DLC Resources, Inc. All Rights Reserved.

Anthem Council Legend

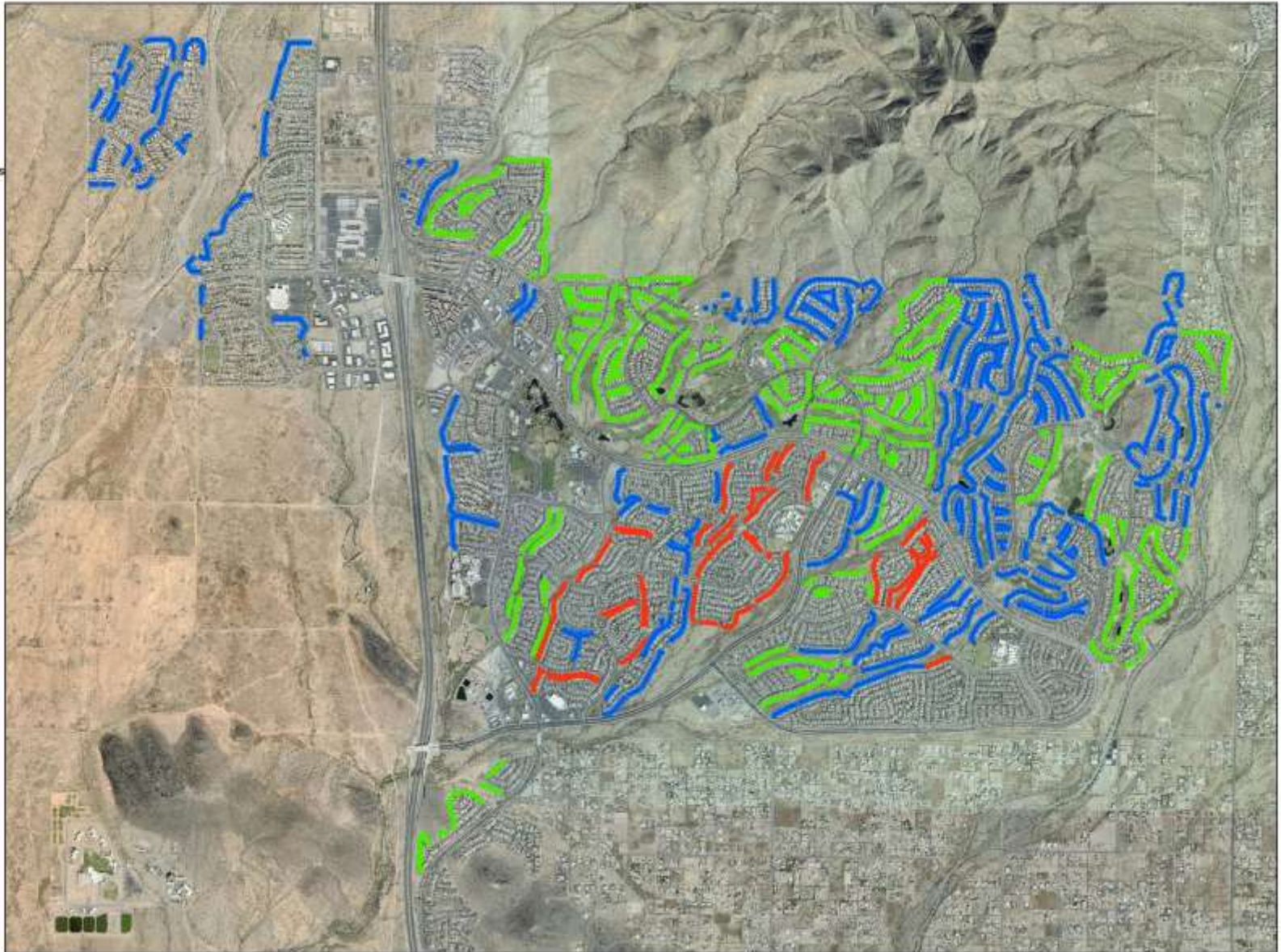
Painted Wall Project 2020

Total - 60.07 Miles

Completed - 23.63 Miles

Not Completed - 6.20 Miles

Maintainable Wall - 30.23 Miles



Anthem Council

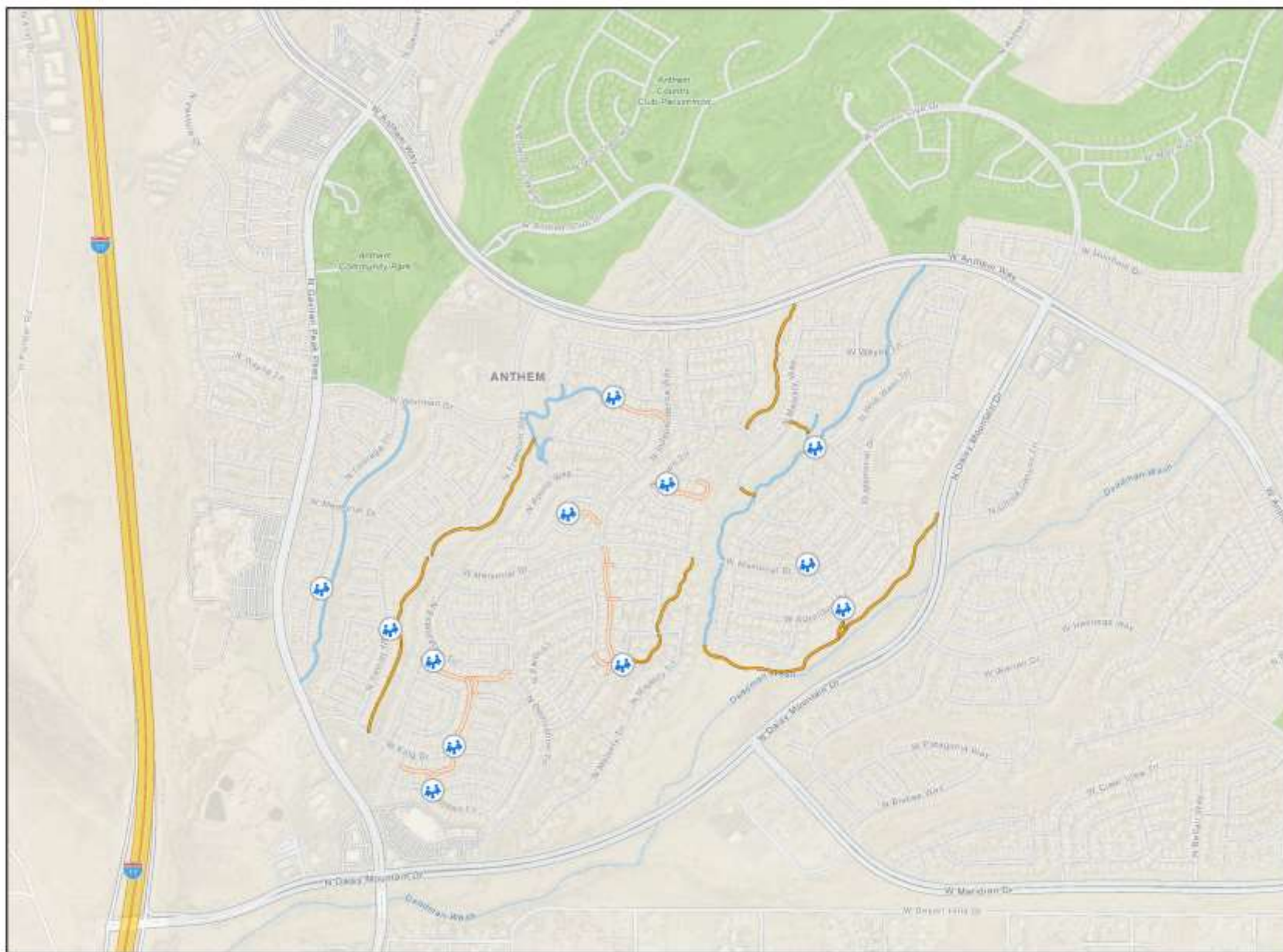
Legend

Anthem Trails

Trails

- Concrete Trail
- Concrete Trail with Bollard Lighting
- Natural Decomposed Granite Trail

- Pocket Parks





Legend

WaterMeters

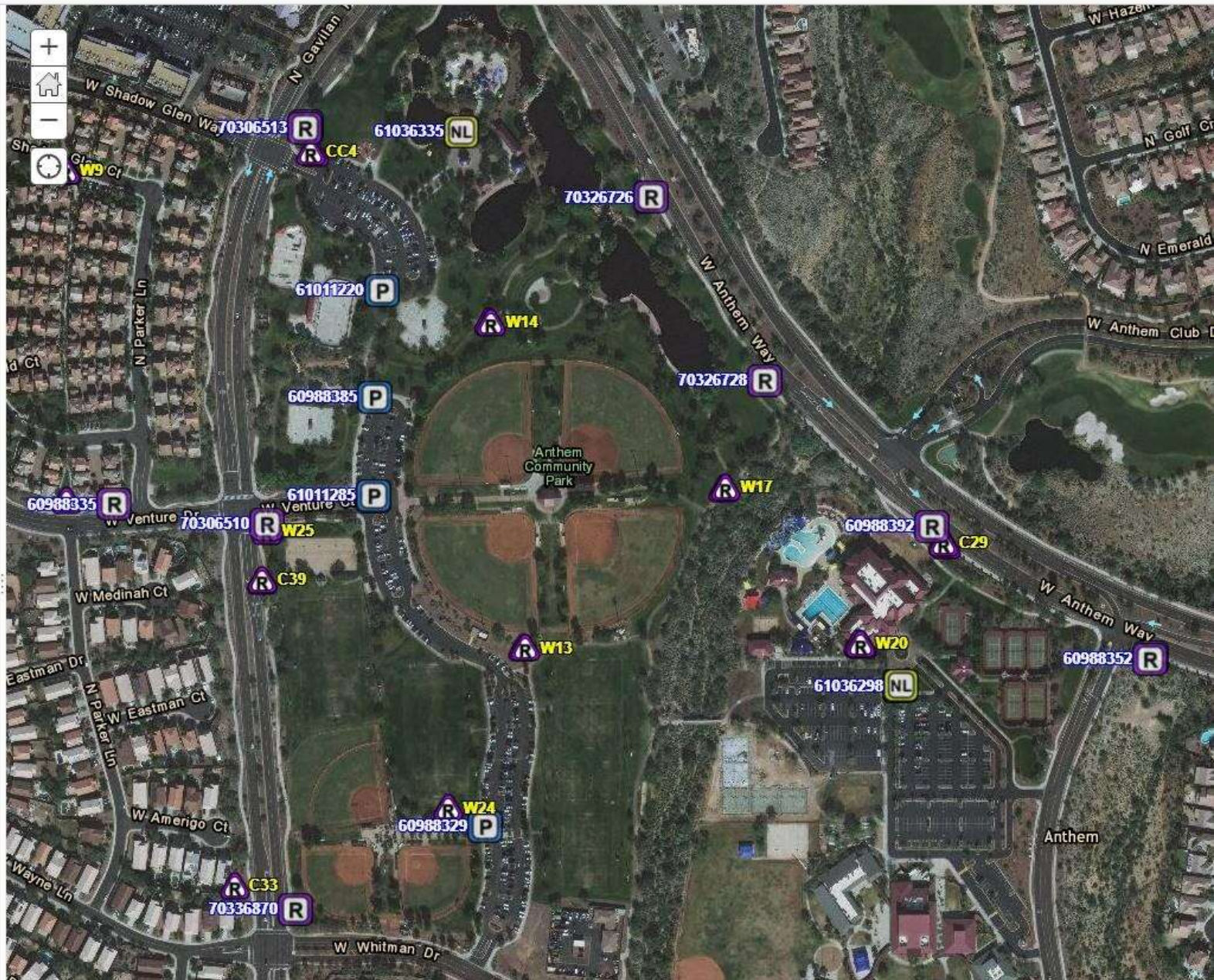
- Inactive
- Non-Landscape
- Other Company
- Potable
- Reclaimed
- Shared
- Unknown

Controller

- Inactive
- Non-Landscape
- Other Company
- Potable
- Reclaimed
- Shared
- Unknown

World Transportation

World Transportation



Partnership and Communication

- Weekly Drives and Meetings
 - Friday drives with Facility Mgmt
 - Wednesday Meetings with Mgmt Team
- Weekly Reports & Schedule to Community Management
- Online Portal and Work Order System
 - Respond quickly to issues
- Coordination/Planning Community Events

Anthem Veterans Memorial

Before



After



People and Processes

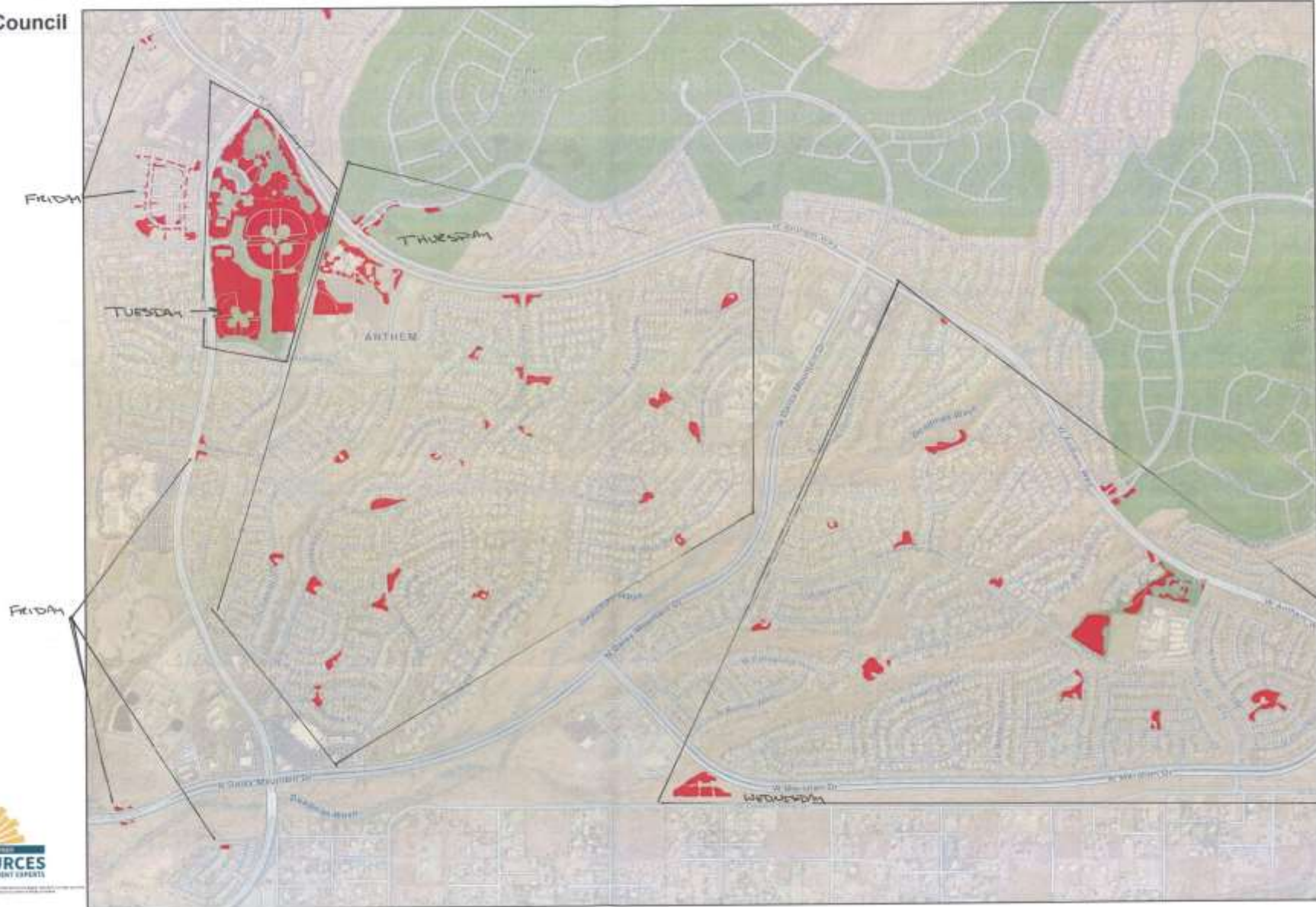
- Mow Routes
- Cart Operator Routes
- High Profile Care (dedicated Crew)
 - Paseo, Civic Center, Discovery Park, Adventure Playground: **Bulmaro Rendon**
 - Community Center/Main Park and Veterans Memorial: **Adalid Angel**
 - Opportunity Way Park – **Ermilo Balam**
 - Liberty Bell Park – **Manuel Gastelum**
 - Dog Park: maintained on Wednesdays, policed daily

Mow Routes

Anthem Council

Legend

Turf





Solidifying Plans, People, Processes

Accountability

- Training/Communication with Team
 - Daily, Weekly, Monthly
- Quality Control
 - Weekly by FM, BM, Anthem Management
- Inspections/Punch Lists
 - Daily by Crew Lead/Foreman, Weekly by FM
 - Feedback from Anthem Management

Our Progress So Far



Shrub and Plant Management

- Pruned and Cleaned aggressively in 2020 (8' down to 6") (will finish in April)
 - Community ready for spring growth
 - Revisiting areas for blowing/debris pickup, light trimming
 - Shrubs can largely be left to grow naturally throughout most of the year



Before



Now




Before



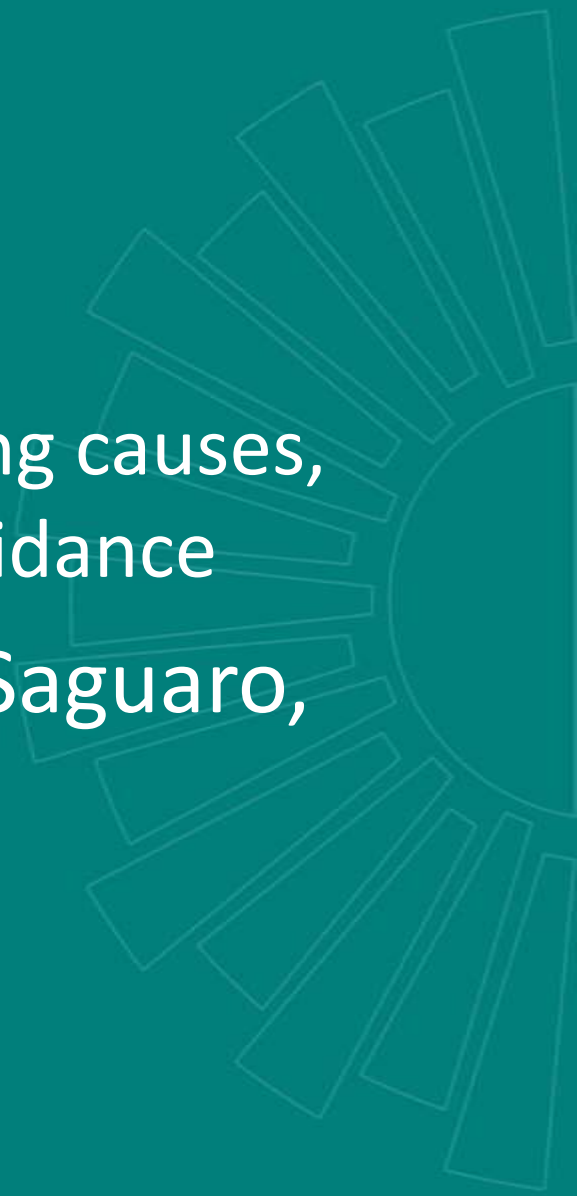
Now

Plant Replacement Plan

- Drip systems must support new plants
 - Council drip system largely non-functional
 - Will create more robust plant replacement plan once infrastructure can support it
- 

Saguaro Loss

- Valley-Wide Problem
 - More prominent issue this year
 - Co-operative Extension researching causes, solutions; we will await expert guidance
- DLC crews cleaning up downed Saguaro, tracking loss locations



Irrigation System

- Quantified and mapped Irrigation System components
- Audited Water bills
 - Verified which Controller operates which Meter
 - Verified the water bill classification
 - Found misclassified meter, which credited Anthem **\$185,813**
 - Continued savings of **\$50,000/yr**

Irrigation System

- Finished turf balancing project last week
 - **More even coverage = Improved turf quality (water savings is just a bonus)**
- Expected water savings after balancing:
5-10% each year
- Meter reclassification credit more than paid for irrigation balancing

Behind Wall Work

Technology



Innovation





Before



Now

Weed Control

- Implemented AGGRESSIVE weed control plan
 - Pre-Emergent **(\$166,750)**
 - 3 weeks; 12 crew members + 2 Spray Foremen
 - Post-Emergent **(\$154,100)**
 - 6 months of spraying
 - 2 Full-time Spray Foreman
 - Continuous and constant monitoring



Early 2020



Early 2020



Early 2020

Arbor Management

- Inventory/Inspection of all common areas
COMPLETE
- Pruned 1,134 trees
- Deferred maintenance: raising canopies to 10'
COMPLETE
- **Going forward** – Inspection done annually and pruning recommendations made
 - Will work in partnership with ACC staff on priority areas within established budget



Before



After

Turf Care: Sports Fields

- **Goal – strengthen Bermuda Crop and improve overall quality**
- Overseed Rotation
 - Did not overseed 3 & 4 this year (test)
 - Improved quality, sports teams ok with it









Looking Forward

- Progress has been made, but these are just building blocks
(Irrigation System, Trees, Shrub and Plant Management, Culverts)
- What we do **today** affects your landscape next **week**, next **month**, next **season**, next **year**

Looking Forward

- Committed to Working with You to Move these Plans Forward
 - **Use Scorecard: feedback, mutual understanding of expectations**
 - Help you make well-informed decisions
 - **Execute Your Vision in Your Landscape**

Questions?
Comments?

